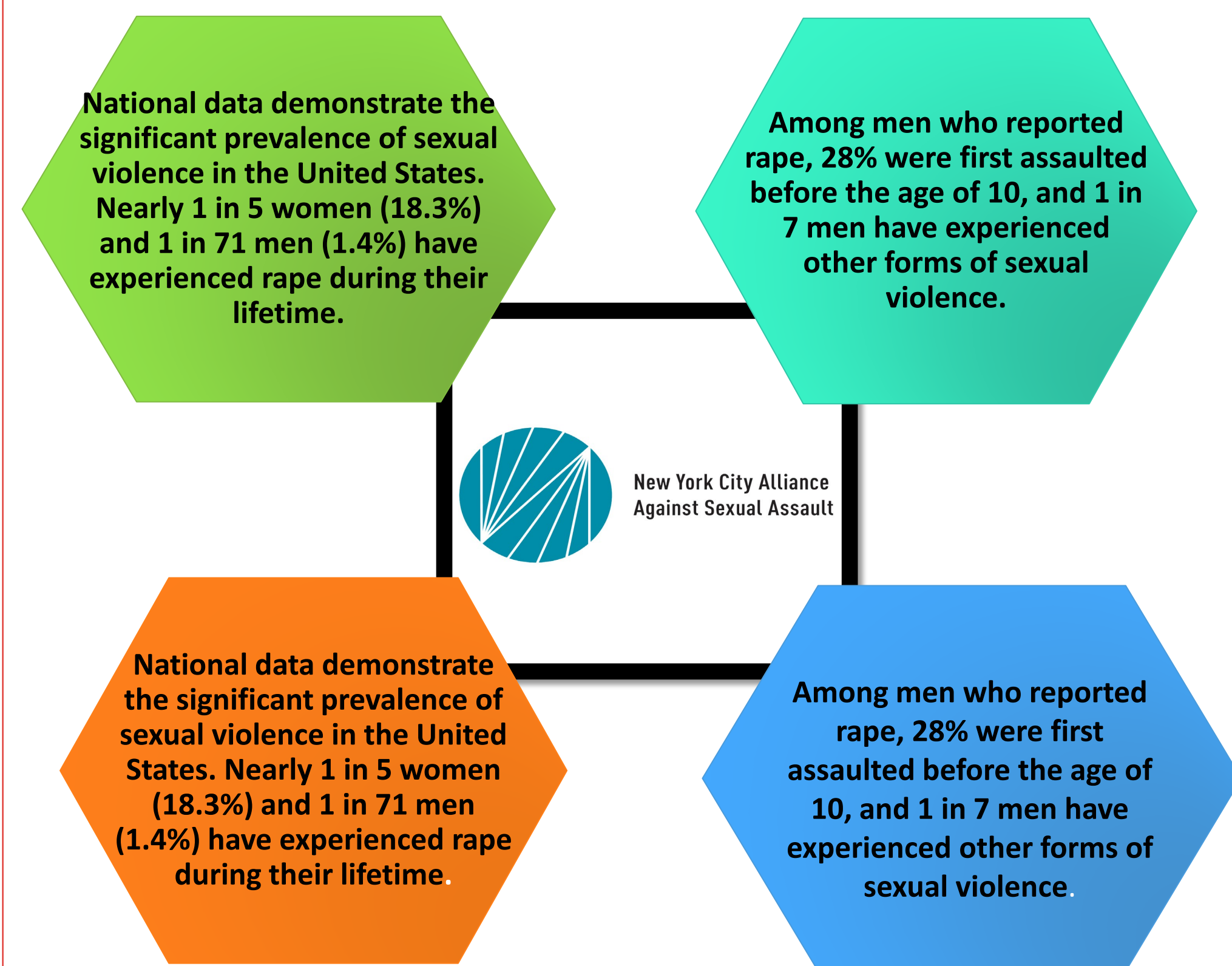
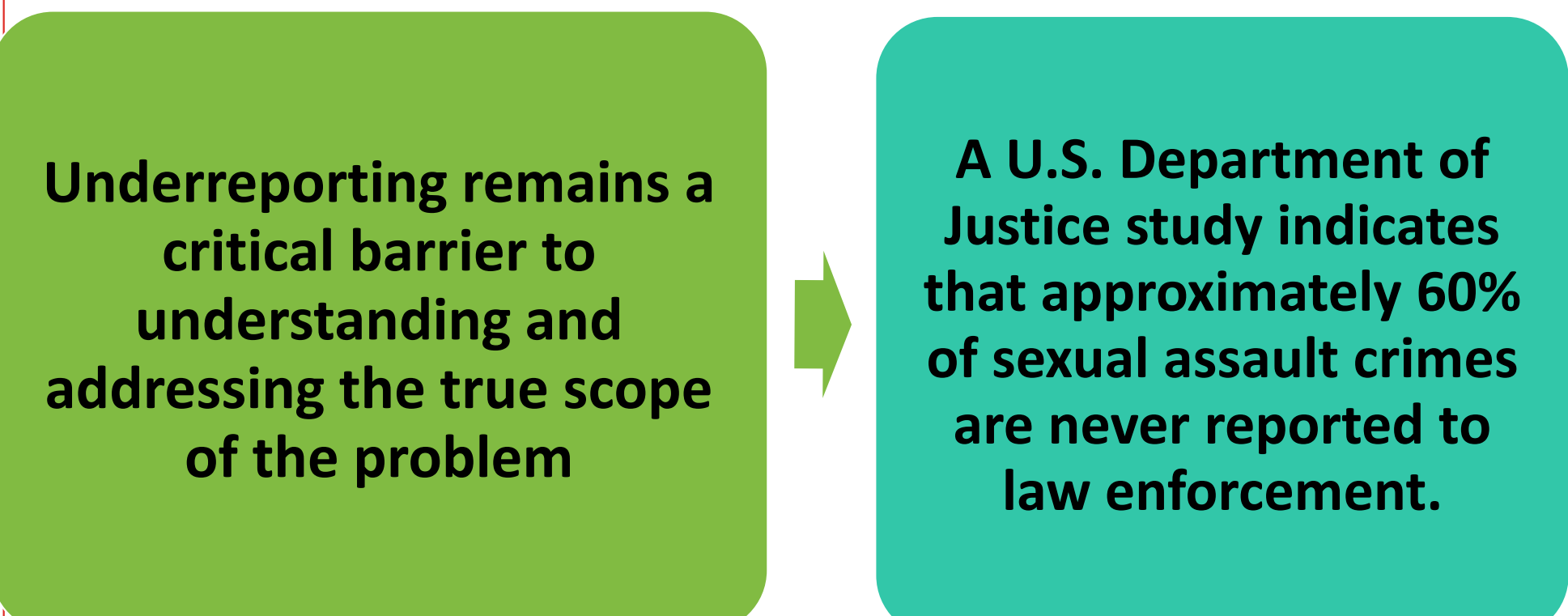


New York Presbyterian Adult Emergency Department Columbia Site

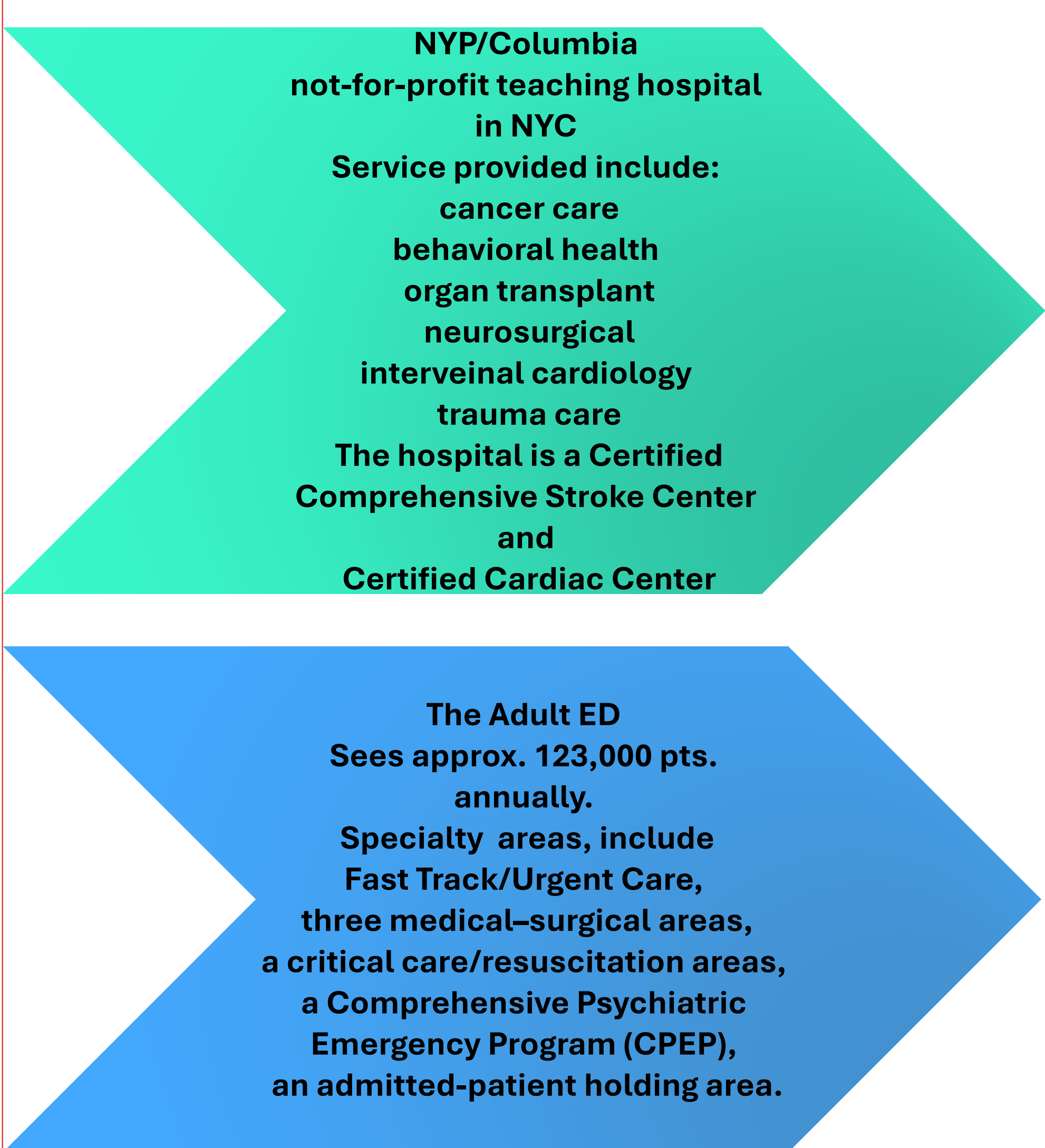
Statement of the Problem:



Barriers to Care



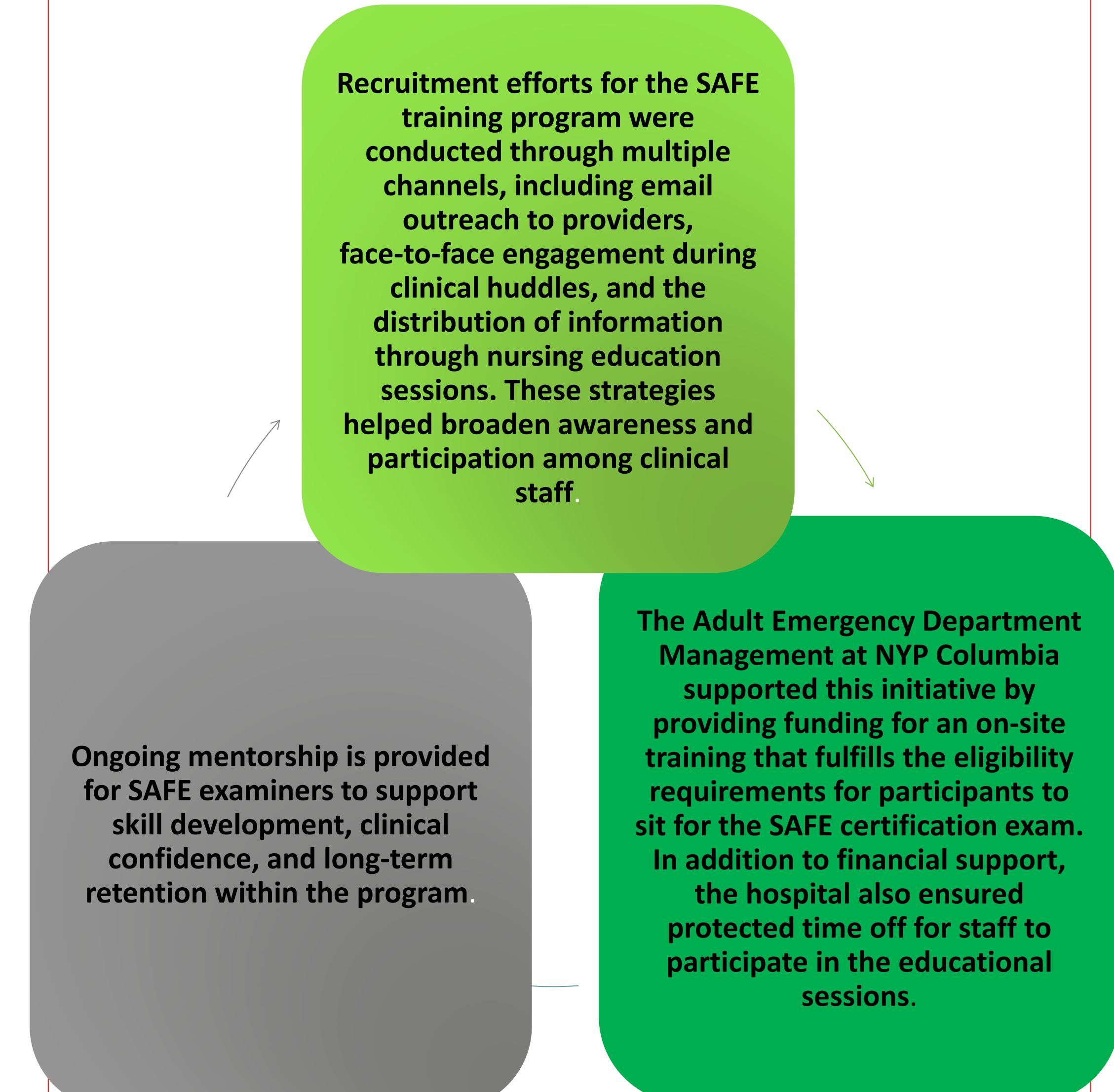
Design Setting



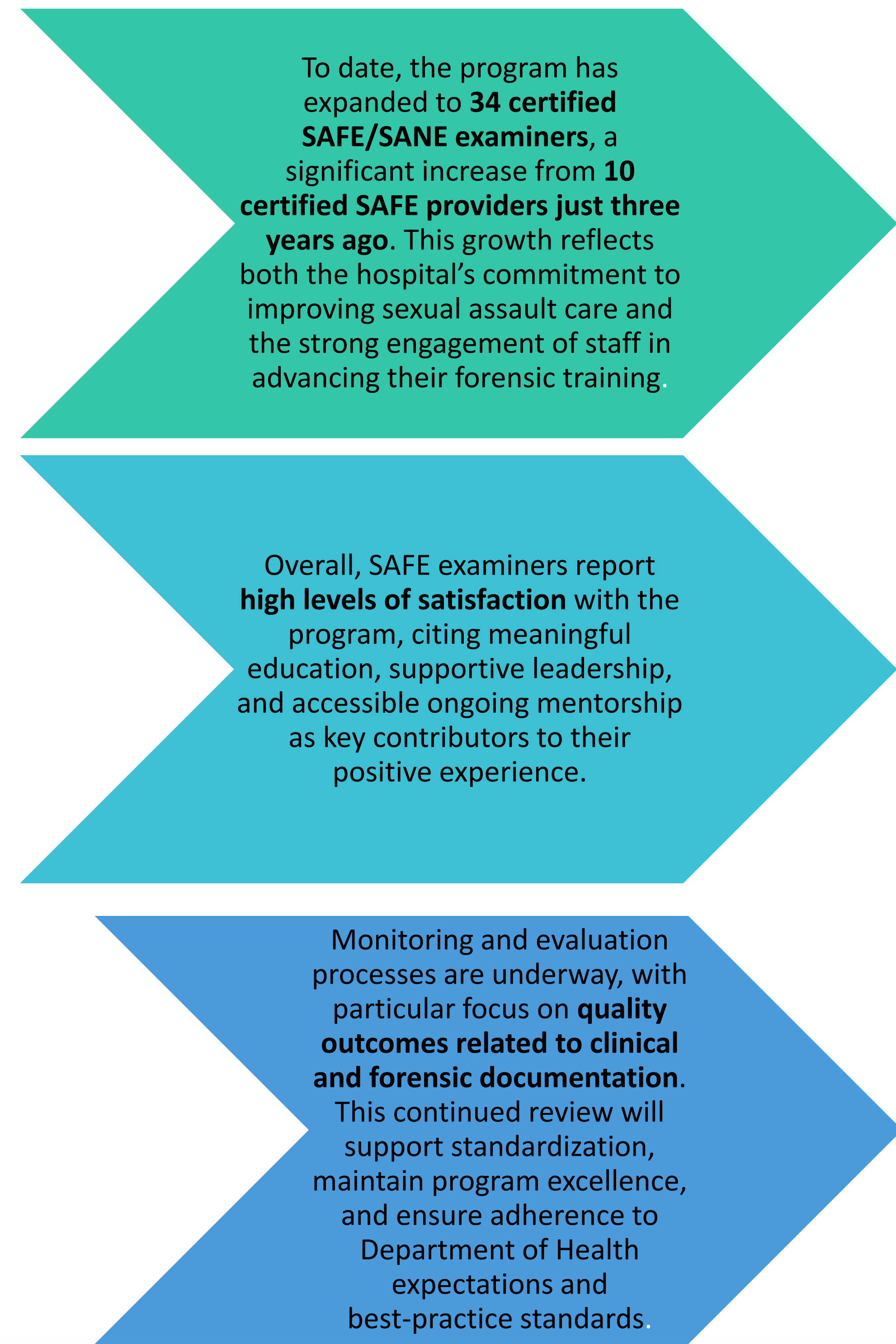
Objectives/Aims



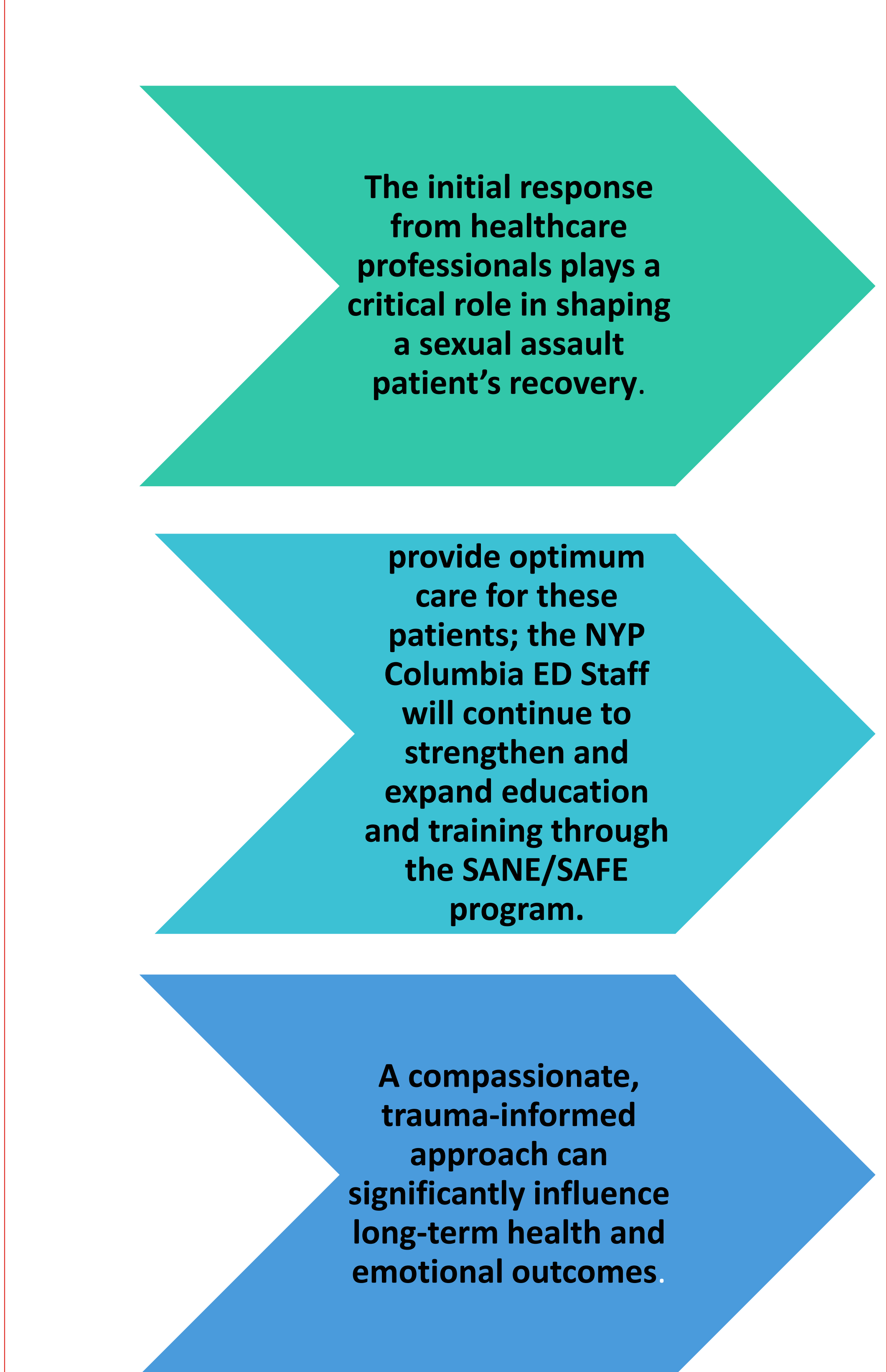
Project Methods



OUTCOMES



Implications/ Conclusions



Contact Information:

Carol Anne Celona, DNP
Adult ED NYP-Columbia Site
cac9115@nyp.org

References

DOJ. (2012). *Victimizations Not Reported to the Police, 2006-2010*. Washington DC: Lynn Langton, Marcus Berzofsky, Christopher Krebs, and Hope Smiley-McDonald. National Center for Injury Prevention and Control, Centers for Disease Control and Prevention. (2011). *The National Intimate Partner and Sexual Violence Survey (NISVS): 2010 Summary Report*. Atlanta, GA: Black, M.C., Basile, K.C., Breiding, M.J., Smith, S.G., Walters, M.L., Merrick, M.T., Chen, J., & Stevens, M.R.

National Black Women's Health Project. (2007). Retrieved from <https://www.blackwomenshealthprint.org/sexual-violence/>. US Department of Health and Human Services, Centers for Disease Control and Prevention [CDC] (n.d.) Youth risk behavior surveillance system (YBRSS). Retrieved from <http://www.cdc.gov/healthyyouth/yrb/index.htm>. Decker M.R., Raj A., & Sierman J.G. (2007). *Sexual Violence Against Adolescent Girls: Influences of Immigration and Acculturation*. *Violence Against Women*, 13,498.

National Center for Injury Prevention and Control, Centers for Disease Control and Prevention. (2011). *The National Intimate Partner and Sexual Violence Survey (NISVS): 2010 Summary Report*. Atlanta, GA: Black, M.C., Basile, K.C., Breiding, M.J., Smith, S.G., Walters, M.L., Merrick, M.T., Chen, J., & Stevens, M.R. 2 Office of Victim Services. (2014). *Responding to Transgender Victims of Sexual Assault*. http://www.ovc.gov/pubs/forge/sexual_numbers.html

National Center for Injury Prevention and Control, Centers for Disease Control and Prevention. (2011). *The National Intimate Partner and Sexual Violence Survey (NISVS): 2010 Summary Report*. Atlanta, GA: Black, M.C., Basile, K.C., Breiding, M.J., Smith, S.G., Walters, M.L., Merrick, M.T., Chen, J., & Stevens, M.R.

Krebs, C.P., Lindquist, C.H., Warner, T.D., Fisher, B.S., & Martin, S.L. (2007). *The Campus Sexual Assault (CSA) Study*. Washington, DC: National Institute of Justice, U.S. Department of Justice.